

Warranty Information

PASGO faucet warrants the original purchase (must have prove of purchase)that such product is free from defect in materials or workmanship for as long as the original consumer purchaser owns their home from the date of purchase. This warranty is limited to but not including labor charges incurred in/or damages sustained during installation, repair or replacement, nor incidental or consequential damages. This warranty does not cover items which are received secondary finishing or have been altered or modified after purchase, or for defects raised by physical abuse to or misuse of the product. This warranty gives the original purchaser of a PASGO faucet specific legal rights which may vary from state to state or from province to province. In some states or provinces the exclusion or limitation incidental or consequential damages is not allowed,for those exclusions may not apply to you.

Thank you for your purchase

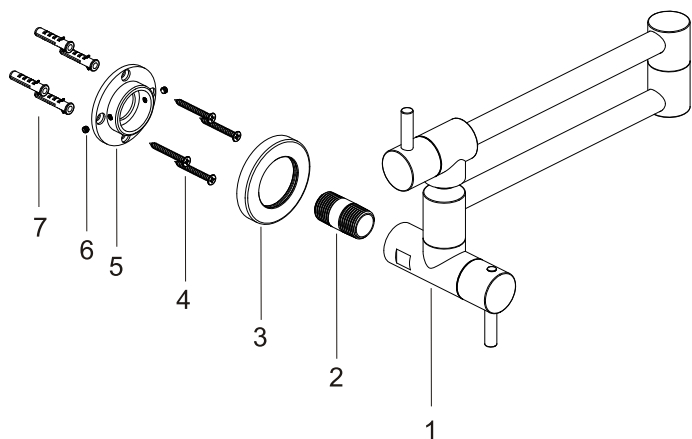


Intallation Manual



Item code: T2028A

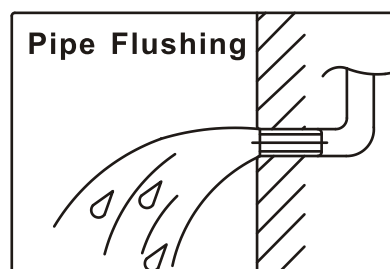
Parts Diagram

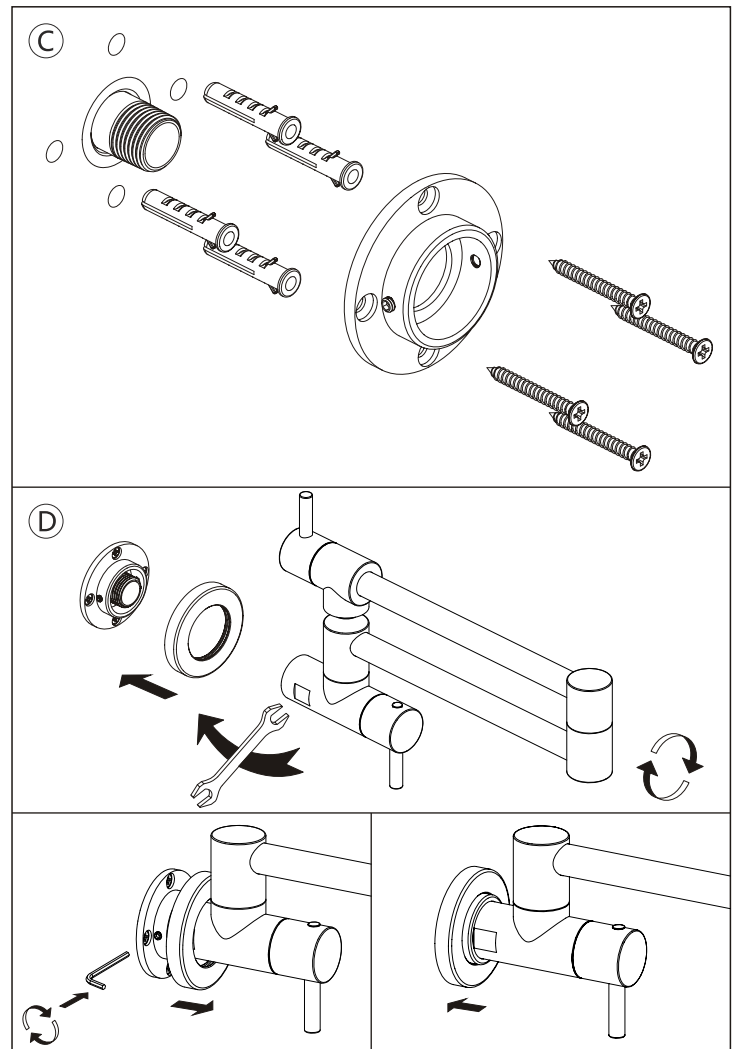
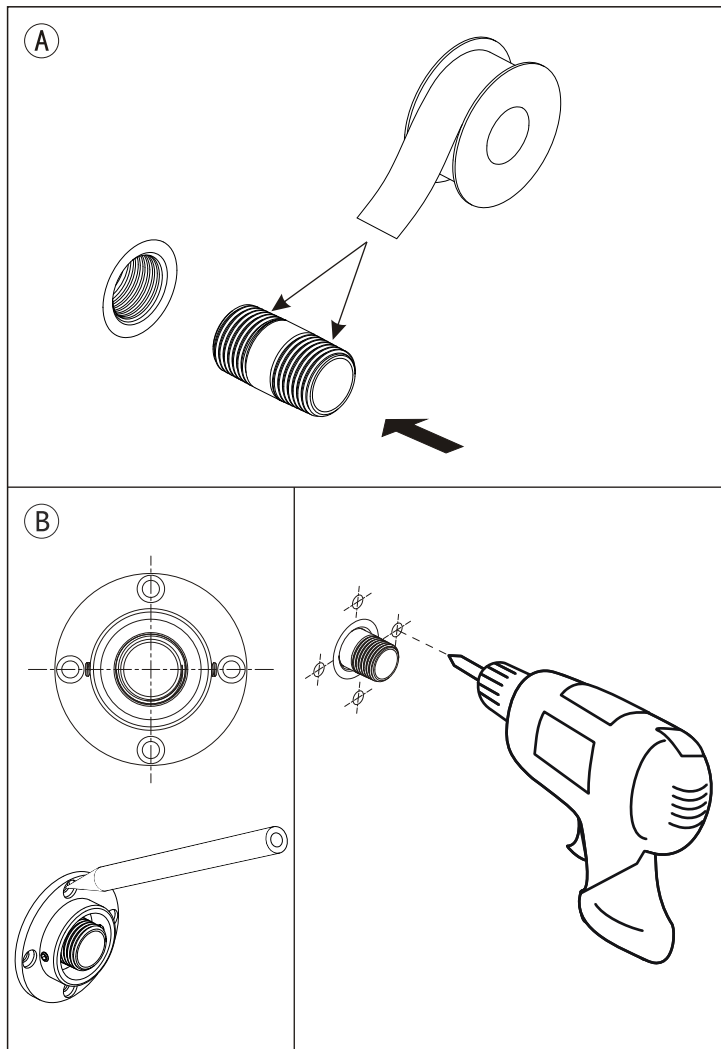


Parts List

NO.	NAME
1	Faucet body
2	Connector
3	Decorative cup
4	M4×35 Screws
5	Fixing bracket
6	M4×3 Screws
7	Wall plugs

Before installation: Clean the pipe before installation to prevent from blocking





FAUCET INSTALLATION STEPS

1. Apply sealant tape to the threads at both ends of the connector and install it into preset water outlet interface. Refer to draft (A).
2. Position the fixing bracket evenly at the water outlet interface, mark the positions with pen, and drill holes at the mark. Refer to draft (B).
3. Insert wall plugs into the holes, place the fixing bracket over the holes aligning them properly, then install and tighten the screws. Refer to draft (C).
4. Slide the flange onto the fixing bracket, then mount the main body onto the bracket (tighten with a wrench). Ensure the faucet is level (with the water outlet facing downward), then move the flange against the main body, and then secure the body with M4 screws. Finally, cover the fixing bracket with the flange. Refer to draft (D).

INSTRUCTION

Make sure the water outlet to pot. Counterclockwise turn both handle to open the water. The larger angle is, the larger flow is. Reset to turn off the water source.

